

October 2009

Club Information	2
Club Trip/Event Policies	2
Club Banking Details	2
Website Password	2
Kayak Hire	3
Regular Events.....	3
New Members.....	3
Club Trips.....	4
Swim Escort Dates	5
Poet's Corner.....	6



Engulfed by History (1) Maraetai to S.W. Waiheke.....	6
President's Report	7
Okahu Bay Ramp Upgrade	8
ACC's Introduction to Sea Kayaking Course	9



WORK IN PROGRESS.

The Okahu Bay ramp upgrade has commenced. (See story on page 8.)

PHOTO ROGER LOMAS

Auckland Canoe Club Information

Postal Address

P.O. Box 9271, Newmarket, Auckland

Clubrooms

Marine Rescue Centre, Mechanics Bay

Website

<http://www.aucklandcanoecub.org.nz>

Email event reminders

send blank email to

subscribe@aucklandcanoecub.org.nz

Officers

<i>Patron</i>	Jim Mason	
<i>President</i>	Ian Calhaem	579 0512
<i>Secretary</i>	Neil Scott	846 4004
<i>Treasurer</i>	Gerard Fagan	832 9720
<i>Trips</i>	Will Henden	550 3699
<i>Publicity</i>	Roger Lomas	846 6799
<i>Training</i>	John Maynard	626 4096
<i>Storage/kayaks</i>	Gavin Baker	528 5188
<i>Assistant</i>	Roger Lomas	846 6799
<i>Merchandising</i>	Neil Scott	846 4004
<i>Vine House</i>	Trevor Arthur	817 7357
<i>Newsletter</i>	Claire O'Connor	521 1769
<i>Webmaster</i>	Matt Crozier	817 1984

Email addresses

patron@aucklandcanoecub.org.nz
president@aucklandcanoecub.org.nz
secretary@aucklandcanoecub.org.nz
treasurer@aucklandcanoecub.org.nz
trips@aucklandcanoecub.org.nz
publicity@aucklandcanoecub.org.nz
training@aucklandcanoecub.org.nz
merchandise@aucklandcanoecub.org.nz
vinehouse@aucklandcanoecub.org.nz
newsletter@aucklandcanoecub.org.nz
webmaster@aucklandcanoecub.org.nz

Club Trip/Event Policies

Visit the Club website for details of safety and other important policies.

Contacting trip/event organiser

You must notify the trip organiser in advance of your intention to go on a trip. Organisers need to know numbers and to be able to contact you if the plan changes.

You must also discuss with the organiser in advance any medical or other conditions (such as your experience and ability) that might affect the progress of the group.

Cancellation

If the weather looks uncertain call the trip co-ordinator.

Club Banking Details

Bank BNZ
Branch Newmarket
Account 02-0100-0023453-000
Name Auckland Canoe Club

IMPORTANT

If you are depositing money to the Club Account please ensure that you include YOUR name so that the Treasurer knows who deposited the money.

Internet Banking

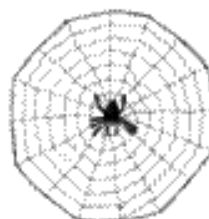
All major banks have set up Auckland Canoe Club as a registered payee for internet banking.

This means that you can pay to

Auckland Canoe Club

without having to enter the account number.

Check with your bank.



**Club Website
Access for October**

Password motukaha



**Deadline
for November
Newsletter**

13 October 2009

Kayak Hire

To book a kayak, enter details in the diary.
Check diary before taking a kayak.

Kayak Hire Rates

Single kayaks

Daily hire – out am, back pm \$20.00

Half day – out am, back am
out pm, back pm \$10.00

Double kayaks

Daily hire – out am, back pm \$30.00

Half day – out am back am
out pm back pm \$15.00

- Please enter details of hire in register and on an envelope.
- Put money in envelope and place envelope in honesty box.
- **No I.O.U.'s!**
- Carry or wheel kayaks to water.
- No seal launching.
- Please wash kayaks before returning to rack.
- Report faults or problems on the faults/problems sheet.

KAYAK STORAGE AVAILABLE

3 x spaces for multisport kayaks

Phone Gavin on 528 5188

Skills Practice

Skills / Rolling Practice – Okahu Bay

Come along to Okahu Bay on Sundays at 10am to brush up on your skills!!

**For more information please phone
John Williams on 021 131 0516**

NEW MEMBERS



Welcome

The Committee extends a warm welcome to the following new members ...

**Victoria and
Nick Fitzpatrick.**

Regular Events

Vine House – Last Weekend of Every Month

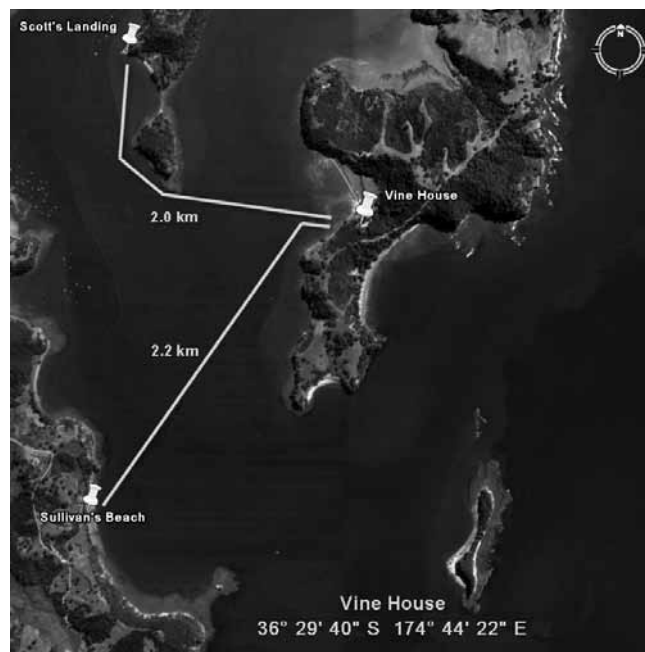
On the last weekend of each month we have the use of Vine House.

This gem in Mahurangi Harbour is a 2 km paddle from Sullivans Bay, which is the ARC park at the end of the Mahurangi West Road, first on the right past Puhoi.

The house sleeps 10 and has all creature comforts. Bring sleeping bag, pillow case and food. A shared meal and nibbles is the norm for Saturday night, so bring your goodies.

Lagoon Bay is very tidal, so bringing a kayak trolley is a good idea. The range of paddling is endless, eg Waiwera, Warkworth, Kawau Island, Motuora Island – your choice. Or just rest and read and enjoy this tranquil and special place. We recommend you take a carry bag to get all your gear up the track to the house. Secure parking is at Sullivans Bay. Leave a note on your dashboard reading “Vine House Volunteer” when you park in front of the ranger’s house.

Please ring to book a bed, and for detailed directions.
Trevor 817-7357, Matt 817-1984.



Tuesday Evening Paddles

A small group of informal paddlers usually meets at the Okahu Bay ramp at about 5:30pm on Tuesday nights.

Saturday Morning Paddles

If you are into good coffee, good company and usually a leisurely paddle then these are the trips for you.

A small but growing group meet about 9:00am on Saturday mornings to paddle to one of the beaches – St Heliers, Kohimarama or Mission Bay for coffee.

Note: Paddlers under 18 to be accompanied by a guardian!

Club Trips – October / November / December 2009

Please phone Wednesday or Thursday to express interest.

Please contact Will on 550 3699 if you are available to take a trip to your favourite destination or one of the following.

Note: Trips will start at the time announced. Ensure you are on time or be left to catch up.

Saturday 3 or Sunday 4 October

Motuora Island

Get away from it all. Distance yourself from the hustle and bustle and discover Motuora Island, one of the true gems of the Hauraki Gulf.

Lunch on either side of the island, one side offering a terrific beach and the comforts of a well situated DOC campground (check it out for a summer camping trip), and the other beautiful beach set beneath a gentle hillside with pohutukawa and a great reef to check out for a return snorkelling trip in summer. Leaving from either Wenderholm or Martins Bay, decided on the day so as to take advantage of any breeze available for an easy cruise back to the cars.

Contact person: Gerard for departure time and day 832 9720 (hm) or 021 071 5917(mob).

Saturday 10 October

Hatfields Beach to Te Muri

Leave from Hatfields Beach just north of Orewa. Paddle up the coast and into the mouth of the Puhoi River with a stop for a cuppa and a cookie. Then on and round the corner to Te Muri. A lovely beach with camping available (check it out for summer). It's a very historic spot with a quaint cemetery on a site where part of Cauldry House (Wenderholm) once stood in its original form as a chapel.

Contact person: Will for departure time 550 3699.

Saturday 17 October

Takapuna to Motutapu

Leave Takapuna and paddle across to Motutapu Island for a leisurely cruise up the northern coast of Motutapu. Visit Administration Bay where army barracks still stand, and are now used as an outdoor education centre. Then paddle back home the way we came.

Contact person: Erica 360 2872.

Labour Weekend 24–26 October

At Justin's Bach at Te Waitere

Enjoy Labour Weekend at Justin's Bach at Te Waitere. Te Waitere is located about 2 and half hours south of Auckland on the West Coast, on the south side of the Kawhia Harbour. During the three days there are several different kayaking trips around the harbour, with unusual rock formations, and walking to remote beaches. Paddling is suitable for all

Arrive on Friday 23rd October to a roaring fire. On Saturday and Sunday evenings there are outdoor baths to enjoy. If the weather is not conducive for paddling there are bush walks, biking and a beach covered in fossils to explore or just R&R.

The bach sleeps 9 and there is room for tents. Bring your own food, sleeping bag and towel plus a contribution of \$10.

For further information and/or to book in and directions contact person: Justin Sanson-Beattie on 0275 232 238 or leave a message on ph 278 8090.

Saturday 31 October

Vine House weekend, Mahurangi Harbour

Come for the weekend, or just a day trip. 15 mins paddle straight over to the Vine House, or explore the Mahurangi Harbour. It's a fantastic part of the Auckland paddling area and offers so much in the way of islands near or far to paddle to, sheltered estuaries and tributaries, and some really beautiful beaches.

Meet at Sullivans Bay at 10:00 am.

No contact person, just show up and get together.

Saturday 7 and Sunday 8 November

Camping at Home Bay, Motutapu

The campground at Home Bay is one of the nicest in the Hauraki Gulf; grassy, sheltered and gets the morning sun. It's been closed all winter during the pest eradication project. This weekend will be the first opportunity to enjoy it again.

Continued on page 5 ➤

Meet at Kohimarama Beach at 9am on Saturday for a 9.30am departure. Bring the usual stuff for an overnight trip, plus \$5 camp fee. We'll paddle to Home Bay via Gardner's Gap (HW 1130) and a clockwise trip around the northern coast of Motutapu. On Sunday some can paddle home in the morning getting a favourable tide through the Motuihe Passage and reaching Kohi by lunchtime; others can spend the day out among the islands and return later. In calm weather the trip is suitable for all; fresh southwesterlies can make the return trip difficult.

All those coming should phone Colin Quilter 630 2219 on Friday evening 6 November after 6pm to check that the trip is on.

To discuss the trip at any time before then, contact Colin on 630 2219 or 360 6271.

Saturday 14 or Sunday 15 November Matakatia to Tindalls

Time for this one again. A neat trip circumnavigating the headland of the Whangaparaoa Peninsula. Starting at Matakatia Bay, it's a 20k one way paddle around a coast where cars can't go! Stop halfway round for a Christmas brunch of mince pies and mulled wine whilst gazing over towards Tiritiri Matangi Island.

Then some good rock gardening awaits as we approach Army Bay, the beautiful secluded Coal Mine Bay and then to Tindalls where it's a short 600m walk across the road to get your car. There can be some great fishing in this area!

Contact person required, email trips officer if you are keen, trips@aucklandcanoecub.org.nz

Sunday 22 November – First Swim Escort

Herne Bay–Masefield Beach (Pt Erin)

Meet at Masefield Beach at 10:00 for a 10:30 start to paddle to start point of race for briefing.

Race starts from Herne Bay at 11.15 am to Masefield Beach (Pt Erin).

Saturday 28 or Sunday 29 November

The Beautiful and Familiar Hauraki Gulf

Paddle from Okahu Bay out the Motuihe Island for a spot of lunch or thermos of coffee. Bring your fishing lines and perhaps a frypan to cook your Kahawai. Or your cricket gear for a game of beach cricket!

Contact person required, email trips officer if you are keen, trips@aucklandcanoecub.org.nz

Sunday 6 December – Second Swim Escort

Masefield Beach–Chelsea Sugar

Meet at Masefield Beach at 9:30 for briefing. Race start 10.15 am.

Sunday 13 December

Christmas breakfast party – Browns Island

What does it mean to be a contact person for a trip?

It means exactly that, a person who people contact. In a recent write up of a trip on Kaukapakapa River, it was written how successful the trip went even with the absence of the person who was "taking the trip". It was a case of club members knowing where to meet and at what time, so they could enjoy each other's company and go paddling together.

A contact person is one who others can call to find out what time and place to meet for a trip, almost like a phone 'notice board'. This person may also have come up with the idea of the trip in the first place.

With no one keen to stick their hand up to take these roles, then club trips can't happen.

If anyone is keen or has trip ideas for the future, that are different to the trips advertised in this newsletter, please email Will – trips@aucklandcanoecub.org.nz

Swim Escort dates for 2010

Saturday 20 February St Heliers to Tamaki Yacht Club

Sunday 21 March Rangitoto Wharf to St Heliers

Poet's Corner

*Small adventures
In little boats
Paddle or sail
As long as it floats
Eschewing an engine
Except when in need
Relying on wind
Or muscle or both
To have an adventure
That's what I read
Once a month
Put together by Claire
So thanks to you people
Who are getting out there
Recounting your stories
Of river and sea
We all need inspiring
Tales told over tea
By ordinary folk
Doing marvelous things
Well to me they are marvelous
That Cup of Tea*

*On the Island of Crusoe
Promised by Colin
There was no Cup of Tea
As Sherlock might say
Because Rosie suggested
Lunch on Motu Ihe
A glorious day
One out of the box
Not a seaslug in sight
Good conversation
With those Cups of Tea
What more could I ask
For a perfect Sunday
It's just such a privilege
To be part of a group
Of like minded paddlers
When the quest for adventure
In the mind is upmost
If it withers away
I fear we are lost.*

Mike Randall

Saturday 17 October

Engulfed by History (1) – Maraetai to S.W. Waiheke

Erica Law

"For about two hours we sailed rapidly through unknown channels and among lofty islands covered with magnificent forest, whose shores were adorned with smiling vegetation ...I particularly noticed on Wai-Heke sites that would be admirably fitted for settlement."

Dumont Durville, 1827.

Source: *Islands of the Gulf*, Shirley Maddock and Don Whyte, 1966.

We know the Islands of the Gulf so well, or do we? This trip aims to explore the S.W. corner of Waiheke, and learn a bit about it as we go.

I will try to find out a bit about the area we will explore, but I'm no historian. So I'd love it if others coming along would also come with a fact or two to share (not compulsory). For instance, can anyone find out how Deadman's Bay came to be named?

A couple of starters:

- Eastern Waiheke was the first part settled by Europeans, and was much favoured by gold miners from the Coromandel. The west was already settled by Maori.
- Waiheke's old name was Te Motu-Arai-Roa, the Long Sheltering Island, and was "thickly timbered to the water's edge", boasting huge kauri trees.

The trip will be weather-dependent, but I'm keen to explore the nooks and crannies along the coast between Awaawaroa Bay and Te Whau Bay. We'll find a lovely little bay to have lunch, and may stop for a look at Whakanewha Regional Park (in Rocky Bay) if the tide isn't too far out.

The trip will leave from Maraetai Beach boat ramp. Approximately an hour each way across the Tamaki Strait, and maybe a couple of hours paddling along the coast of Waiheke.

Phone Erica on 3602872 to find out time of departure, and to ensure the trip is still on.

If no-one home, please leave your name and phone number on the answer phone.

President's Report

Dear All,

I have had a busy month, but as most of it was spent out of the country I am unable to comment on the activities such as kayak trips here in Auckland.

What I have been working on is an upgrade of the website, so that it has all the latest software installed. A couple of the applications had been found wanting with regard to security and although we have not detected any hacking the potential was there. The Calendar system did fail and although it was reported as a server issue may have been the result of other activity.

All applications are now running the latest secure versions and the site should look similar to what it was before. I am hoping that our new webmaster can now develop parts of the site and update the information contained.

I have to confess to one small problem, the photo gallery. Although I backed everything up somehow I did not update the gallery with the names of the photographers. The images are there but not the names – sorry folks.

Please send any information updates or other suggestions to webmaster@aucklandcanoecub.org.nz

I do have one exciting development to report...

Whilst I was away John Maynard and others have been working on a practical skills course which is to be run in November. The details are elsewhere in this newsletter but the intention is to develop a course for absolute basic kayakers – maybe those planning on purchasing a new kayak for Xmas. The course will consist of a progression of practical days starting with simple paddle strokes etc in Okahu Bay, followed by a day in the harbour itself, and then a weekend away at Vine House which will put trip planning into practice.

Interleaved with the practical course will be two evenings of kayak theory which consists of the Coastguard Kayak module.

Numbers will be limited so do read the details and enrol early so that you are not disappointed.

Safe paddling,

Ian

Lost Items

Orange Kathmandu Dry Bag containing bright orange jacket

If anyone has found these items on their travels,
please phone Philip Noble on 575-3493.

Club Beachcomber for sale



Lightweight

Length 4.88m

Width 60cm

Weight 18kg

One careful owner – The Club

\$1,800 each (current RRP \$2,950)

First in, first served.

Contact Gavin at

Storage@AucklandCanoeClub.org.nz

Okahu Bay Ramp Upgrade



WORK IN PROGRESS. The Okahu Bay ramp upgrade has commenced.

PHOTO ROGER LOMAS

On Monday the 21st of September the long-awaited ramp improvements commenced.

In about 2 months' time, weather permitting, the entire length of the nearly 70-year-old ramp will be rehabilitated. This will involve the placement of precast concrete slabs over the existing ramp in the tidal zone and pouring a concrete topping in situ over the remaining upper slopes. The surface facing of the new overlay will have diagonal grooving. A water blasting contractor will then be tasked with maintaining an algae free surface (We will just have to wait and see about that). The placement of the precast slabs is weather and tide dependant so no exact construction schedule is available. There will be periods of construction that will restrict access to the club locker. Users of this club facility are advised that if they require 24/7 access to their kayaks stored in the club locker that they should remove them and make other storage arrangements during the construction period. The contractors will try to minimise the inconvenience but there will be times when access will be completely blocked.

Auckland Canoe Club's Introduction to Sea Kayaking (in conjunction with Coastguard Northern Region)

Week One

Wednesday 11 November

Venue	Presentation Room (upstairs), Marine Rescue Centre, Tamaki Drive
Time	7.00 – 9.00pm
Lecture on	Clothing Equipment Safety Procedures Club locker protocol / systems Weather and sea conditions
Briefing on	On first paddle including water / food Video / DVD

Saturday 14 November

Venue	Club locker, Okahu Bay
Time	1.00 – 3.00pm
Paddle to	Hobson Bay and back, staying inside the breakwater
Using Club boats	Preparation and equipment Launching, safe entry Forward paddle Back paddle, emergency stop Low brace Controlled turns (sweep) Capsize routine – rescue

Continued on page 10 ➤

Week Two

Wednesday 18 November

Venue	Presentation Room (upstairs), Marine Rescue Centre, Tamaki Drive
Time:	7.00 – 9.00pm
Coastguard	Sea Kayaking Course
First of two 2-hour lessons	Types of kayak Sea Kayak equipment Keeping in touch Dealing with emergencies Trip Planning

Saturday 21 November

Venue	Club locker, Okahu Bay
Time:	12 noon – 3.30pm
Trip to	Achilles Point, St Heliers and back
or to	Judges Bay Beach and back
or to	North Head / Cheltenham Beach and back
	Additional skills development

Sunday 22 November

Swim Escort	Paddle from Masefield Beach, Curren Street to Herne Bay Beach for start of race, then escort swimmers back to Masefield Beach. Club boats available free of charge
-------------	---

Continued on page 11 ➤

Introduction to Sea Kayaking Course

– continued from page 10

Week Three

Wednesday 25 November

Venue	Presentation Room (upstairs), Marine Rescue Centre, Tamaki Drive
Time:	7.00 – 9.00pm
Coastguard	Sea Kayaking Course
Second of two 2-hour lessons	Wind, weather forecasts and Hazards Rules of the Road Navigation Biosecurity Sources of information <i>Examination and Certificate</i>

Saturday 28 November

Mahurangi Harbour/ Vine House	Kayak from Sullivans Bay, Mahurangi West to Vine House – practice sea kayak skills with guidance from club members – stay overnight at Vine House
----------------------------------	---

Sunday 29 November

Extended sea kayak trip, lunch, then return to vehicles
at Sullivans Bay

Interested persons please contact John Maynard

Phone (09) 626 4096 Mobile (021) 166 3107 Email j.mayak@xtra.co.nz

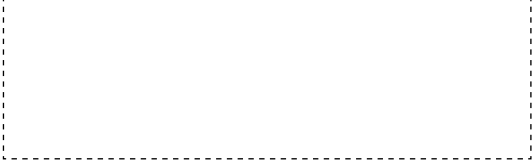
Cost:

Members \$195.00 Non-members \$245.00

Kayak hire:

\$19.00 per person for each day \$72.00 per person for the weekend

This course includes the cost of the Coastguard Sea Kayaking Course
and a certificate on completion



From: Auckland Canoe Club, P.O. Box 9271, Newmarket, Auckland



To:

