



August 2008

Club Information	2		
Club Trip/Event Policies	2		
Club Banking Details	2		
Website Password	2		
Editorial.....	3		
President's Report	3		
Kayak Hire	3		
Regular Events.....	3	New Members.....	6
Raid on Rhamnus	4	Poet's Corner.....	6
Pristine Beaches		Club Trips.....	7
Under Threat.....	5	Auckland Central Masters	
Winter Lecture Series.....	6	Harbour Swim Dates	7



Early morning club kayakers Kevin Woolcott, David Lomas and Wolfgang Pohl enjoy sunrise on the Manukau.

PHOTO R. LOMAS

Auckland Canoe Club Information

Postal Address

P.O. Box 9271, Newmarket, Auckland

Clubrooms

Marine Rescue Centre, Mechanics Bay

Website

<http://www.aucklandcanoecub.org.nz>

Email event reminders

send blank email to

subscribe@aucklandcanoecub.org.nz

Officers

<i>Patron</i>	Peter Godfrey	520 5444
<i>President</i>	Ian Calhaem	579 0512
<i>Secretary</i>	Alissa Good	269 5888
<i>Treasurer</i>	Gerard Fagan	832 9720
<i>Trips</i>	Will Henden	486 6215
<i>Publicity</i>	Roger Lomas	846 6799
<i>Training</i>	John Maynard	626 4096
<i>Storage/kayaks</i>	Gavin Baker	528 5188
<i>Assistant</i>	Roger Lomas	846 6799
<i>Merchandising</i>	Neil Scott	846 4004
<i>Vine House</i>	Trevor Arthur	817 7357
<i>Newsletter</i>	Claire O'Connor	521 1769
<i>Webmaster</i>	Ian Calhaem	579 0512

Email addresses

patron@aucklandcanoecub.org.nz
president@aucklandcanoecub.org.nz
secretary@aucklandcanoecub.org.nz
treasurer@aucklandcanoecub.org.nz
trips@aucklandcanoecub.org.nz
publicity@aucklandcanoecub.org.nz
training@aucklandcanoecub.org.nz
merchandise@aucklandcanoecub.org.nz
vinehouse@aucklandcanoecub.org.nz
newsletter@aucklandcanoecub.org.nz
webmaster@aucklandcanoecub.org.nz

Club Trip/Event Policies

Visit the Club website for details of safety and other important policies.

Contacting trip/event organiser

You must notify the trip organiser in advance of your intention to go on a trip. Organisers need to know numbers and to be able to contact you if the plan changes.

You must also discuss with the organiser in advance any medical or other conditions (such as your experience and ability) that might affect the progress of the group.

Cancellation

If the weather looks uncertain call the trip leader. The Newstalk ZB Cancellation Service is no longer being used.

Club Banking Details

Bank BNZ
Branch Newmarket
Account 02-0100-0023453-000
Name Auckland Canoe Club

IMPORTANT

If you are depositing money to the Club Account please ensure that you include YOUR name so that the Treasurer knows who deposited the money.

Internet Banking

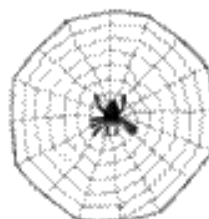
All major banks have set up Auckland Canoe Club as a registered payee for internet banking.

This means that you can pay to

Auckland Canoe Club

without having to enter the account number.

Check with your bank.



Club Website Access for August

Password Rotoroa



Deadline for September newsletter

12 August 2008

President's Report

Dear All,

You will see from this newsletter that our new committee is well and truly up and running. It is a pleasure to work with such a dedicated team and I am sure that all members are grateful to each of you. Check out the Committee contact details on page 2 to see what changes have been occurring lately.

I continue to be involved in the development of the Landing – our “home” – and things are now progressing, even if a bit slowly. I have heard back from the Council in response to a formal request for Official Information and they have promised to get information to me by the end of July. I will give you an update in the next newsletter.

Please read the details of the trip that Colin has organised with DOC to clear weed on Browns Island. This will be a fun trip and a great change to mix and mingle whilst doing something positive for our community.

Happy Paddling,

Ian

Kayak Hire

To book a kayak, enter details in the diary. Check diary before taking a kayak.

Kayak Hire Rates

Single kayaks

Daily hire – out am, back pm	\$20.00
Half day – out am, back am out pm, back pm	\$10.00

Double kayaks

Daily hire – out am, back pm	\$30.00
Half day – out am back am out pm back pm	\$15.00

- Please enter details of hire in register and on an envelope.
- Put money in envelope and place envelope in honesty box.
- **No I.O.U.'s!**
- Carry or wheel kayaks to water.
- No seal launching.
- Please wash kayaks before returning to rack.
- Report faults or problems on the faults/problems sheet.

Regular Events

Vine House – Last Weekend of Every Month

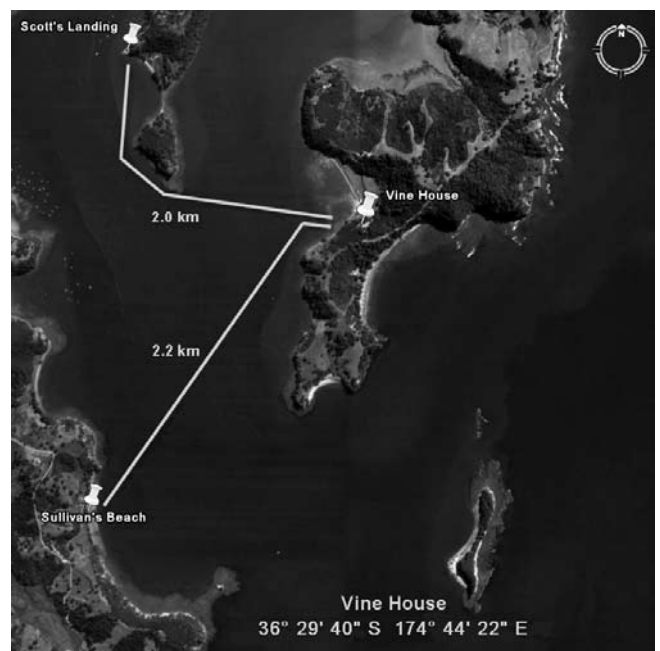
On the last weekend of each month we have the use of Vine House.

This gem in Mahurangi Harbour is a 2 km paddle from Sullivans Bay, which is the ARC park at the end of the Mahurangi West Road, first on the right past Puhoi.

The house sleeps 10 and has all creature comforts. Bring sleeping bag, pillow case and food. A shared meal and nibbles is the norm for Saturday night, so bring your goodies.

Lagoon Bay is very tidal, so bringing a kayak trolley is a good idea. The range of paddling is endless, eg Waiwera, Warkworth, Kawau Island, Motuora Island – your choice. Or just rest and read and enjoy this tranquil and special place. We recommend you take a carry bag to get all your gear up the track to the house. Secure parking is at Sullivans Bay. Leave a note on your dashboard reading “Vine House Volunteer” when you park in front of the ranger’s house.

Please ring to book a bed, and for detailed directions. **Trevor 817-7357, Matt 817-1984.**



Tuesday Evening Paddles

A small group of informal paddlers usually meets at the Okahu Bay ramp at about 5:30pm on Tuesday nights.

Saturday Morning Paddles

If you are into good coffee, good company and usually a leisurely paddle then these are the trips for you.

A small but growing group meet about 9:00am on Saturday mornings to paddle to one of the beaches – St Heliers, Kohimarama or Mission Bay for coffee.

Raid on Rhamnus

Colin Quilter

Some time ago I wrote a newsletter article about an exotic weed which is invading the Hauraki Gulf islands. The plant is the Evergreen Buckthorn *Rhamnus alaternus*. It is a medium-sized tree reaching about 10 metres in height, with glossy green leaves and red berries on female plants in early summer. Birds feed on the berries and seedlings germinate from their droppings, so once the buckthorn is established it is spread rapidly by birds. The worst feature of this alien is that it grows faster than most native plants, and it likes exposed coastal cliffs where if unchecked it will out-compete tukawa and eventually completely replace it.



Rhamnus is well established on the Motutapu cliffs overlooking Islington Bay. DOC have been attacking it there but the trees are big and hard to kill. It has spread around the entire coastal margin of Rangitoto, and across the summit cone. Infestations also occur on Waiheke, Rakino, Motuihe and Crusoe Island. The ARC's Auckland Regional Pest Management Strategy notes that Rhamnus is "well established in the inner Hauraki Gulf... and is likely to become an extremely widespread and serious pest of native ecosystems."

Recently I've been watching a new generation of Rhamnus springing up on Browns Island. There are, I guess, a few hundred small plants mostly between knee-high and waist-high. They are scattered all around the coastal fringe of the island, with heavy infestations beneath trees where birds roost, particularly on the northern side of the island.

Scattered plants are also established across the open slopes of the volcanic cone, where they are visible from a long distance as dark green spots among the grass. Most of these plants have stems about as thick as a finger. At this size they could easily be cut off close to the ground and the stumps painted with herbicide, which would be an effective control before the plants have a chance to produce a crop of berries. If this generation of plants is allowed to get any bigger then not only will they be much harder to kill, but birds will have dispersed the seeds and another generation will spring into life.

It seems to me that an Auckland Canoe Club **Raid on Rhamnus** at Browns Island would be a chance for us to make a really beneficial impact on an island we all know and love. I think that if we could place 20 kayakers on the island for one day, armed with loppers, secateurs, pruning saws and herbicide, we could probably destroy most of the Rhamnus there. This would free up DOC to concentrate their efforts on other islands where the trees are much bigger and harder to kill.

I've been in contact with Steve Benham of DOC, who says that they would certainly appreciate our help on Browns Island. Steve is willing to come with us if we organise a weekend trip.

So: here are the details of the Raid on Rhamnus.

Date: Sunday 24 August

Meet at the boat ramp, St Heliers Beach, at 9.00am for a 9.30am departure.

Bring: shoes, lunch, snacks, thermos

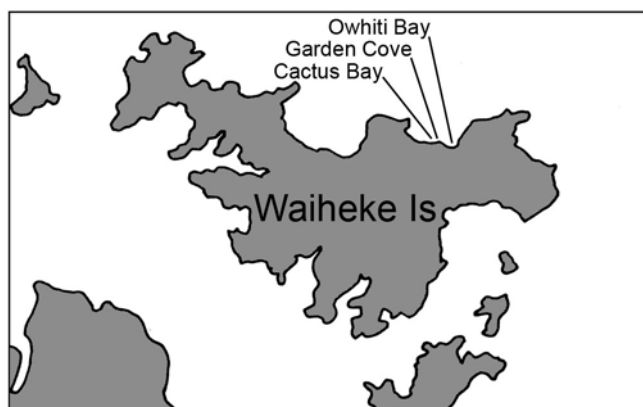
Tools: please bring long-handled loppers if you have them. Secateurs will be OK for small plants and pruning saws might be needed for a few larger ones. The club will supply herbicide (a gel formulation called "Vigilant") to apply to the cut stumps, and chemical-resistant gloves.

If the weather forecast is doubtful: phone Colin Quilter 630 2219 on Saturday evening or Sunday morning between 7.00 and 8.00am; (the herbicide gel can't be applied in rain so we need reasonably fine weather).



Pristine Beaches Under Threat

Colin Quilter



Kayakers who have explored the coast of Waiheke Island will know that the only remaining “wilderness” areas are on the northeastern corner. Here a few beautiful bays remain undeveloped, in contrast to the urban sprawl which has covered most of the western end of the island. However if applications which the landowners now have before the Auckland City Council are successful, two of the most beautiful beaches will have houses built on them, and an application to build on a third beach is likely to follow.

The beaches currently under threat are Owhiti Bay and Cactus Bay. Both are on the north coast between Onetangi and Hooks Bay. These are classic east coast white-sand beaches, backed by low sand dunes and grassy flats. Once they were part of a string of similar beaches (Oneroa, Palm Beach, Onetangi etc.) but now the others are dominated by houses and asphalt. Only Cactus Bay, Garden Cove and Owhiti Bay survive to remind us of how this coast once was.



Overlooking the western end of Owhiti Bay

The landowners applied first to build a four-bedroom home and guest accommodation at the western end of Owhiti Bay. They were required to seek Resource Management Consent because the proposed buildings contravene both the current and the proposed district plan. The district plan seeks to preserve the natural and scenic qualities of the beach in its undeveloped state. Owhiti Bay also has historical

significance because it is a site of very early Maori settlement, and local Maori have opposed the application on those grounds. Submissions closed on April 16 and the City Council has yet to report a decision.

The second application by Man O War Station Ltd is to construct two buildings in Cactus Bay. A house is proposed for the eastern end of the bay, and a boatshed with attached sleepout for the western end. Permission to build an access road is also sought; it will wind down the hillside leading into the bay. The buildings and road do not comply with the current and proposed district plan, and require Resource Consent. Submissions on this application closed on 23 May.

Documents which form part of the Cactus Bay application indicate that the landowners intend to lodge a third application for a building in Garden Cove, but I have yet to see notification of that.

I have strong feelings about development of these beaches. On a personal level they matter to me because in my youth I visited them often by dinghy or yacht, walked over them, fished from them and camped on them. The scenes of childhood holidays become deeply embedded in one's psyche, and I will feel a great sense of loss if the wilderness qualities of those beaches are diminished.

Much more important will be the loss to future generations of Aucklanders. As coastal development proceeds relentlessly the protection of the few remaining undeveloped beaches becomes ever-more important so that our grandchildren can see at least a remnant of what the Northland coast once was. Even though under current ownership public access to these beaches can only be had by boat, as long as the beaches remain undeveloped there remains the hope that in the future public walkways might give better access, or that part of the land might return to Crown ownership to form a park or reserve. Once private buildings are on these beaches I think that chance will have been lost.

If you have never kayaked the northeastern corner of Waiheke, my advice is, do it soon. If the proposed development is allowed then these beaches, which are nothing less than precious gems of the Hauraki Gulf, will be changed for ever.

The application relating to Garden Cove will no doubt be notified in the Auckland City Council newsletter “City Scene” delivered free to Auckland households, so watch for it there. It costs nothing to make a submission opposing the application, and if anyone wants ideas about how to do that I would be happy to help.

Winter Lecture Series 2008

Sea Kayaking Around Great Barrier Island Wednesday 20th August

During the idyllic days of last summer, a group of club members headed off to Great Barrier Island for a sea kayaking holiday. Gerard Fagan and Iris Wegmueller will recount the adventure and enjoyment experienced as their group paddled around the magic islands that are just over the horizon from Auckland.

The winter lecture series is open to everyone, so feel free to bring along a friend. It is also an ideal evening to catch up with club mates and provides a good opportunity for newer members to meld in with our friendly club.

Meet at the Marine Rescue Centre on Tamaki Drive at 7.00 pm for a 7.30 start.

A \$2 door charge covers your supper and helps with a gift for our guest.

The Winter Lecture Series will run over consecutive months from June through to September.

**For more information phone Roger Lomas
09 846 6799**

NEW MEMBERS



Welcome

The Committee extends a warm welcome to the following new members ...

**Irene van Woerden
Craig Newton
Steve Robson**

Poet's Corner

*I was having a chat to Roger
On the phone the other day
And we got to reminiscing about the past
He said how about a poem
For the newsletter next month
The sort of stuff – well he didn't need to ask.*

*Now it's hard to write a poem
When you haven't got the nous
When the muse is really absent from your life
But there's nothing like a paddle
To clear away the blues
Especially those the hue of winter strife.*

*Well a bit of meditation
Sometimes helps at times like this
And what better place than in a kayak pit
So I gathered up my kayak
On this grey and wintery day
To see if paddle strokes would do the trick.*

*A brisk norwest was blowing hard
The tide was coming in
Just right for a little adventure in the waves
Those winter blues were ebbing
As I put the paddle in
The notes to a song already on the stave.*

*It's all been said before
The joys of sitting in a boat
But to me those kayak moves feel like the first
The wind and waves both with you
Though slower than a bike
Many things in life could be much worse.*

*Now I'm not a one for cliches
I avoid them like the plague
And cringe at words like poetry in motion
But playing in the sea
In our little narrow shells
Is part and parcel of a kayakers devotion.*

*I'm the coward of the county
When it comes to giant waves
An aged Kereopa I am not
But in the middle of the winter
There's usually a place
On this bloody marvellous coast that Auckland's got.*

*But if you're sitting in your lounge
And it's tipping down with rain
Or you're tucked up warm and cosy in your bed
You can do some virtual paddling
Some imaginary rolling
Perchance one's life is mainly in the head.*

Mike Randall

Club Trips – August 2008

Please phone Wednesday or Thursday to express interest.

Please contact Will on 486 6215 if you are available to take a trip to your favourite destination or one of the following.

Note: Trips will start at the time announced. Ensure you are on time or be left to catch up.

Saturday 2 or Sunday 3 August

BON ACCORD HARBOUR AND MANSION HOUSE BAY

Leave from Martins Bay and paddle across to Bon Accord Harbour. Then out of the harbour and around the corner into the northern inlet of Kawau. Come back and lunch at Mansion House Bay with a hot coffee or whatever takes your fancy at the cafe. Then back across to Martins Bay.

Call Will on 486 6215 for details on put in spot and departure time.

Saturday 9 or Sunday 10 August

WAIROA RIVER

High tide Saturday 13.13pm and Sunday 14.06pm.

A 20 km one way paddle from Umupuia Beach, around Whakakaiwhara Point and over to the Wairoa River.

With the incoming tide we will proceed up to Clevedon Bridge (and perhaps beyond).

Meet at the large car park opposite Umupuia/Duders Beach (where the sharp bend in the road is).

Car ferrying will be arranged between Umupuia Beach and Clevedon.

Phone Helen Orchard 444 1397 for departure time and details.

Saturday 16 or Sunday 17 August

MOTUORA ISLAND

Get away from it all. Distance yourself from the hustle and bustle and discover Motuora Island, one of the true gems of the Hauraki Gulf. (Let's try this one again!!)

Lunch on either side of the Island, one side offering a terrific beach and the comforts of a well situated Doc Campground (check it out for a summer camping trip) and the other beautiful beach set beneath a gentle hillside with Pohutukawa and a great reef to check out for a return snorkelling trip in summer. Leaving from either Wenderholm or Martins Bay, decided on the day so as to take advantage of any breeze available for an easy cruise back to the cars.

Call Gerard 832 9720 (hm) or 021 071 5917(mob) for departure time and day

Sunday 24 August

RAID ON RHAMNUS Browns Island

Meet at the boat ramp, St Heliers Beach, at 9.00am for a 9.30am departure.

Bring: shoes, lunch, snacks, thermos

Tools: please bring long-handled loppers if you have them. Secateurs will be OK for small plants and pruning saws might be needed for a few larger ones. The club will supply herbicide (a gel formulation called "Vigilant") to apply to the cut stumps, and chemical-resistant gloves.

If the weather forecast is doubtful: phone Colin Quilter 630 2219 on Saturday evening or Sunday morning between 7.00 and 8.00am; (the herbicide gel can't be applied in rain so we need reasonably fine weather).

Weekend of 30 and 31 August

THE BEAUTIFUL AND FAMILIAR HAURAKI GULF

Let's try this one again!!

Paddle from Okahu Bay out to Motuihe Island for a spot of lunch and a thermos of coffee. Bring your fishing lines and perhaps a frypan to cook your Kahawai.

Trip leader required, call Will 486 6215 if you would be interested in taking this trip.

Auckland Central Masters Harbour Swim Dates

Herne Bay Beach to Masefield Beach (Pt Erin)

9th November 08, start 15:36, 50min, tide 16.36.

Masefield Beach (Pt Erin) to Chelsea Sugar

30th November 08, start 9:00am, 75min, tide 10:04.

St Heliers to Tamaki

15th February 09, start 11:00am, 90min, tide 12:40.

Rangi Wharf to St Heliers

1st March 09, start 9:00am, 120min, tide 11:21.



From: Auckland Canoe Club, P.O. Box 9271, Newmarket, Auckland



To:

